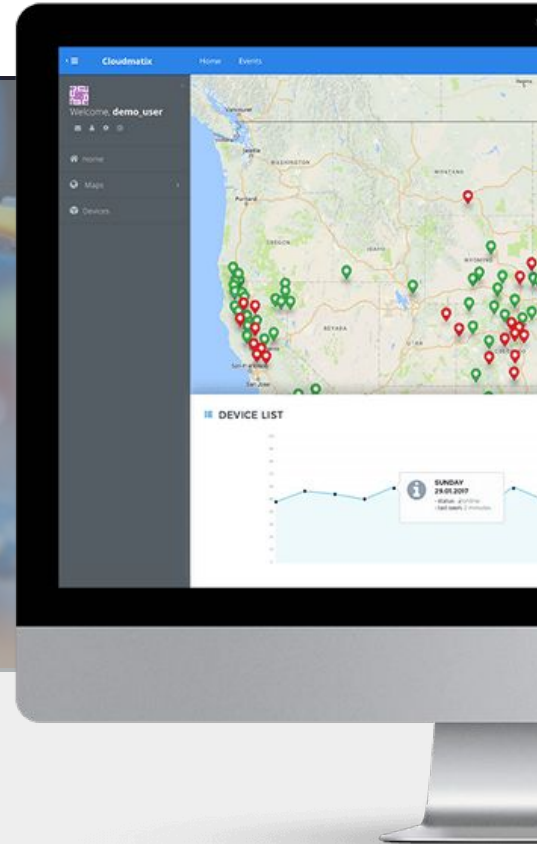


SMART LIGHTING SOLUTIONS



Summary

The client, a provider of lighting solutions, was looking for support in managing devices used in its complex smart lighting applications. The company was interested in optimizing device activation, advanced device management, task automation using third party platforms and customer relation management. To meet the client's needs, we used CX, a complete IoT platform that delivers the required functionalities, as part of key benefits that it offers: product lifecycle management and IoT business integration.

The Client

The client is an established provider of lighting solutions, focusing on maximizing productivity, comfort & savings. The company's product offering includes advanced smart lighting for residential and commercial buildings.

The Challenge

The challenge was to seamlessly optimize key stages in the deployment and utilization of smart lighting solutions: device activation, multi user device sharing, Alexa/IFTTT integration and CRM integration.

CX Platform Benefits

To meet the client's requirements, we deployed CX, a platform that encompasses a comprehensive set of IoT tools, with a focus on device lifecycle management, third-party connectivity and business integration.

The platform provides the type of integration that the client required to ensure device management and usage analytics.

CX delivered out-of-the-box instruments for the client's needs. It covers all the functionalities needed for device provisioning and activation, for flexible, multi-level user management, as well as built-in integration with automation tools such as IFTTT or Alexa.

Results

By using CX functionalities, the client was able to optimize key elements of its advanced smart-lighting solutions. The client is now able to use a single dashboard to monitor essential stages in delivering and maintaining its solutions.

Moreover, the extended capabilities of the Cloudmatix platform enable fast streamlining of future developments within the client's infrastructure.